



# TRACY

# LHSC

FACILITY ID#: BD004

## LOLLY HANSEN SENIOR CENTER

<b>375 EAST 9<sup>TH</sup> STREET, TRACY, CA</b> LHSC weekday rentals subject to availability outside program hours <b>Weekends start on Friday after 5pm</b>		Classification	Classification	Classification
		NON-PROFIT	PRIVATE	COMMERCIAL
<b>ENTIRE FACILITY (5,819 SF)</b> <b>Minimum Rental:</b> ~ 4 hours <b>Max Occupancy:</b> ~ 290 <b>Includes:</b> ~ Lobby, Main Hall, Classrooms 1 & 2, Kitchen, Outdoor Area, & Restrooms <b>Amenities:</b> ~ Dividable Rooms (1 Partition, makes 2 sections) ~ Warming kitchen (189 sf.), Oven, 6 Burners, Refrigerator (No Freezer), Serving Counter		Weekend: \$240/hr. Weekday: \$171/hr.	Weekend: \$398/hr. Weekday: \$276/hr.	Weekend: \$554/hr. Weekday: \$378/hr.
		<b>DEPOSIT:</b> \$800 (Damage Deposit) \$600 (Alcohol Deposit) If applicable <b>Total: \$1,400 (Damage + Alcohol Deposit)</b> <b>Extra Dumpster Disposal Fee:</b> Required for Crab Feeds and other rentals as deemed necessary by staff. \$56 (Processing Fee) Actual Cost (Dumpster Fee) <b>*LOBBY FURNITURE CANNOT BE MOVED</b>		
<b>MAIN HALL (3,120 SF)</b> <b>Minimum Rental:</b> ~ 4 hours <b>Max Occupancy:</b> ~ 208 <b>Includes:</b> ~ Main Hall, Kitchen, & Restrooms <b>Amenities:</b> ~ Dividable Room (1 Partition, makes 2 sections)		Weekend: \$158/hr. Weekday: \$116/hr.	Weekend: \$252/hr. Weekday: \$178/hr.	Weekend: \$346/hr. Weekday: \$241/hr.
		<b>DEPOSIT:</b> \$800 (Damage Deposit) \$600 (Alcohol Deposit) If applicable <b>Total: \$1,400 (Damage + Alcohol Deposit)</b> <b>Extra Dumpster Disposal Fee:</b> Required for Crab Feeds, the third rental of a weekend, or as deemed necessary by staff. \$56 (Processing Fee) Actual Cost (Dumpster Fee)		
<b>CLASSROOM 1 &amp; 2 (1,238 SF)</b> <b>Minimum Rental:</b> ~ 4 hours <b>Max Occupancy:</b> ~ 82 <b>Amenities:</b> ~ Dividable Room (1 Partition, makes 2 sections) ~ Restrooms ~ Spacious counter tops with sinks		Weekend: \$146/hr. Weekday: \$115/hr.	Weekend: \$194/hr. Weekday: \$152/hr.	Weekend: \$247/hr. Weekday: \$190/hr.
		<b>DEPOSIT:</b> \$500 (Damage Deposit) \$600 (Alcohol Deposit) If applicable <b>Total: \$1,100 (Damage + Alcohol Deposit)</b>		
<b>OUTDOOR AREA (1,948 SF)</b> <b>Rental Requirement:</b> ~ Only Included with Main Hall or Entire Facility Rental		Weekend: \$110/hr. Weekday: \$73/hr.	Weekend: \$142/hr. Weekday: \$94/hr.	Weekend: \$185/hr. Weekday: \$123/hr.
<b>TABLES:</b> 20 – 10ft long tables (seating for 200) 10 – 5ft rounds (seating for 80)		<b>CHAIRS:</b> 100 padded chairs 100 plastic chairs		
<b>RENT A FACILITY:</b> ~ \$42 App Fee + Deposit(s) = Hold Date. ~ \$16 Non-Profit Verification Fee, if applicable. ~ Insurance + Use Fee + Any Additional Requirements = Due 20 business days prior to event date or risk having permit revoked. ~ Additional Requirements and/or Permits may be placed on your rental after further review. ~ Application and payment of fees does not guarantee permit approval. ~ Rental times must include both setup and cleanup.		<b>INSURANCE:</b> Certificate and endorsement page must meet the outlined Insurance Requirements. (See Insurance Requirements) <b>CANCELLATION POLICY:</b> over 90 days prior..... No Penalty 89-31 days prior.....50% fees 30-11 days prior.....100% fees 10 days or less.....100% fees (Handbook Page 13)		

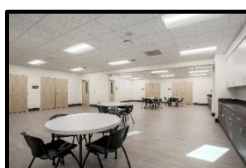
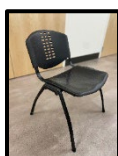
Reservations can be made by contacting the City of Tracy Parks & Recreation Department, Community Facilities Division at 333 Civic Center Plaza, Tracy, CA 95376, by email at [facilityreservations@cityoftracy.org](mailto:facilityreservations@cityoftracy.org), or by phone at (209) 831-6201.



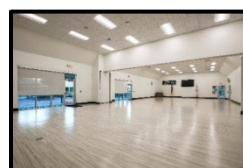
Pleasant Entrance



Spacious Kitchen  
Plastic Chairs



Large Combo Classroom



Spacious Main Hall  
Padded Chairs



Covered Patio