

# TRACY NATURE PARK DRAFT MASTER PLAN

Tracy Parks Commission Meeting

March 5th 2020



CITY OF  
**TRACY**  
CALIFORNIA  
Think Inside the Triangle™





# INTRODUCTION who what why where



86 Acre Site



CITY OF  
**TRACY**  
CALIFORNIA  
Think Inside the Triangle™





# NATURE PARK?

defining nature in the context of Tracy

# NATURE LOST

a brief history on the evolution of 'The Delta'

# NATURE FOUND

documenting the life that exists

# NATURE CREATED

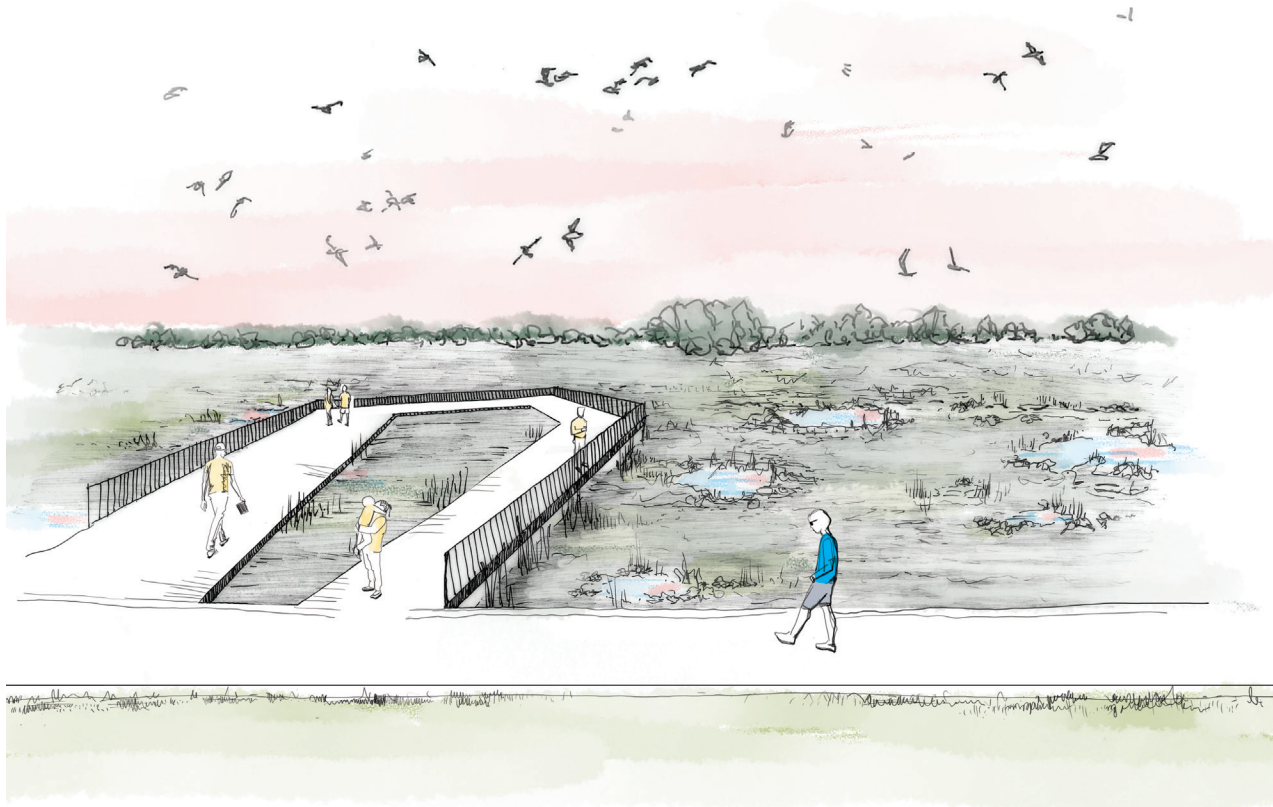
designing nature in a city

# NATURE ENABLED

revealing of Tracy Nature Park Master Plan

# TRACY NATURE PARK

question & comment



# NATURE PARK? defining 'nature' in the context of Tracy



RESPIRE FROM URBAN LIFE

CREATION OF A FUNCTIONING ECOLOGY



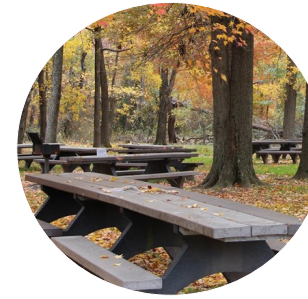
word cloud from a summary from the The Tracy Nature Park kickoff





# NATURE PARK ? a community vision

- Native Plants
- Habitat buffers
- Habitat islands
- Multi-Use Trail on periphery open to bikes and dogs\*
- Interior trails to be for passive use/hiking only
- Disc Golf\*
- Gathering and contemplative space
- Boardwalks over sensitive areas
- Berms with overlooks
- Protection from westerly winds
- Dedicated parking
- Interpretive Nature Center



GATHERING AND  
CONTEMPLATIVE  
SPACES



WET MEADOW  
LANDSCAPE



OAK WOODLAND



OUTDOOR  
CLASSROOM



NATURE TRAIL



INTERPRETIVE  
NATURE CENTER



NATURE TOURS / VOLUNTEER  
OPPORTUNITIES



ELEVATED  
WALKWAYS



MULTI-USE TRAIL\*

List compiled based on a series of community workshops.

\*As the community members expressed a desire for more active uses within the park, they should be enabled in a manner consistent with the ecological and nature-based vision.





# NATURE LOST

a brief history on the evolution of 'The Delta'



*Habitat complexity of the South Delta. by artists and naturalist Laura Cunningham*



*This early 1900s photograph showing dredging work on a levee. (Covello ca. 1900, courtesy of Bank of Stockton Historical Photograph Collection)*



# NATURE FOUND

documenting the life that exists



Rosie the River Otter



Hank the Heron



Larch Clover Community Center



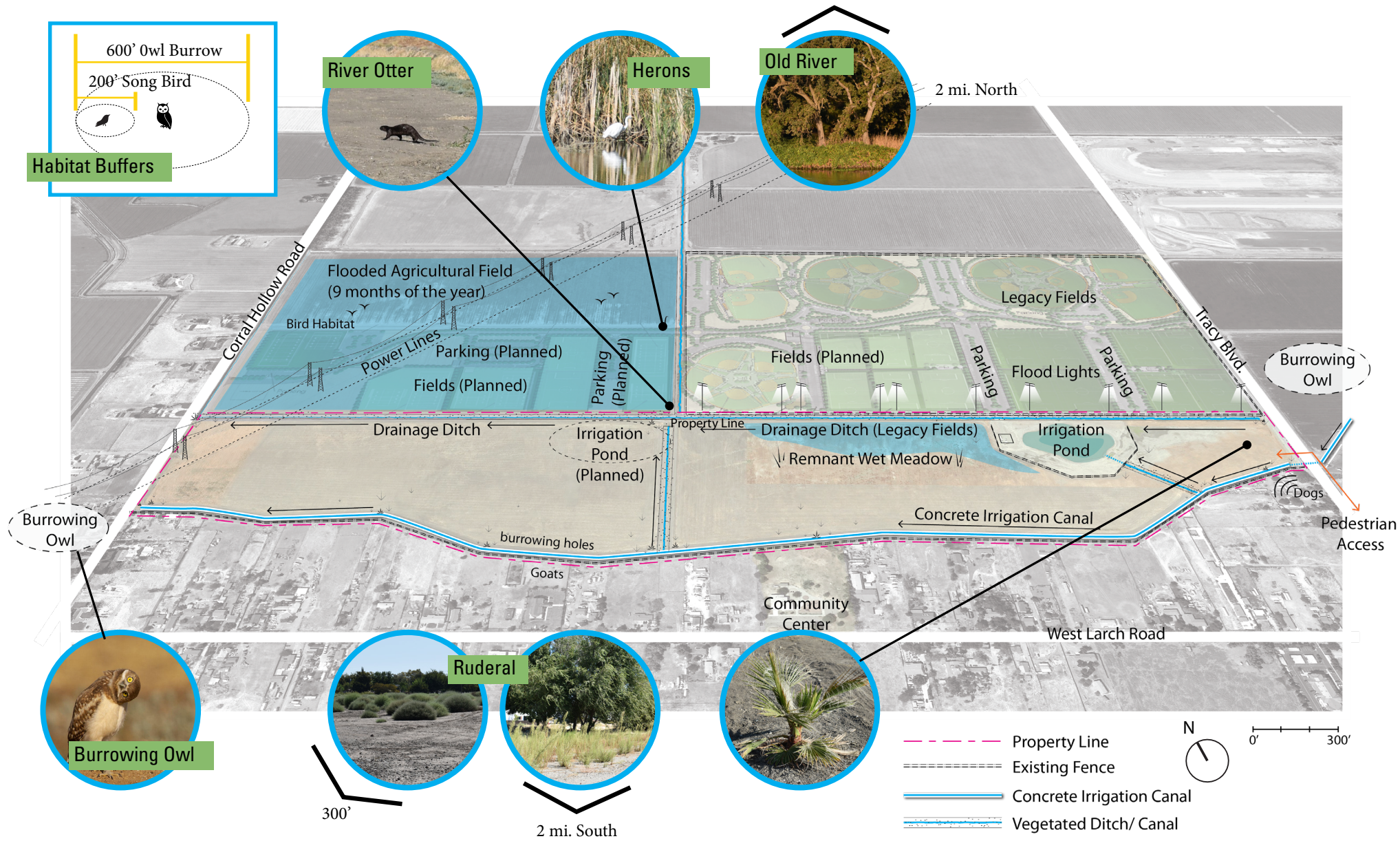
Nearby Remnant Habitat





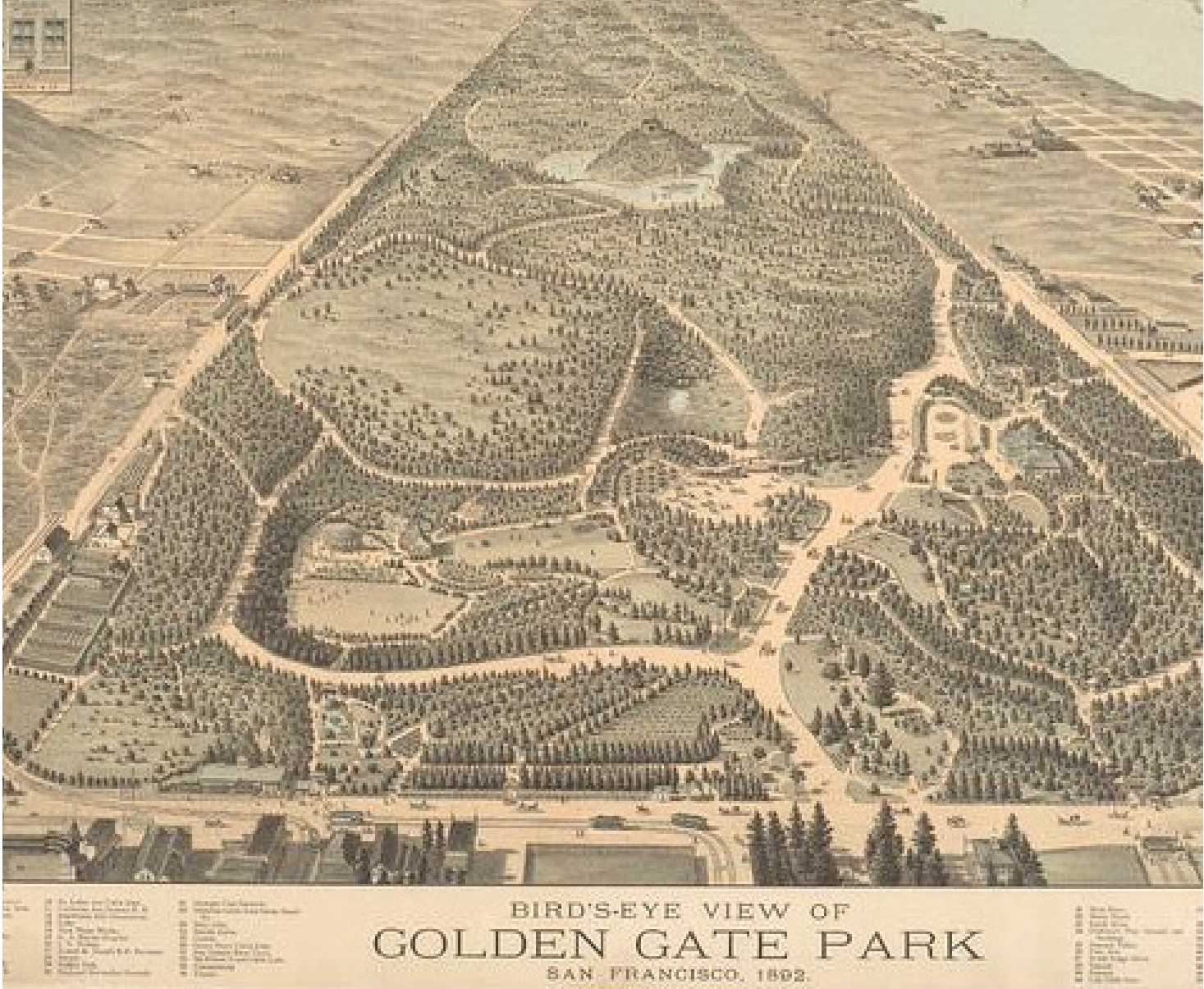
# NATURE FOUND

mapping ecological potential





# NATURE CREATED designing nature in a city





# NATURE ENABLED Succession as a tool



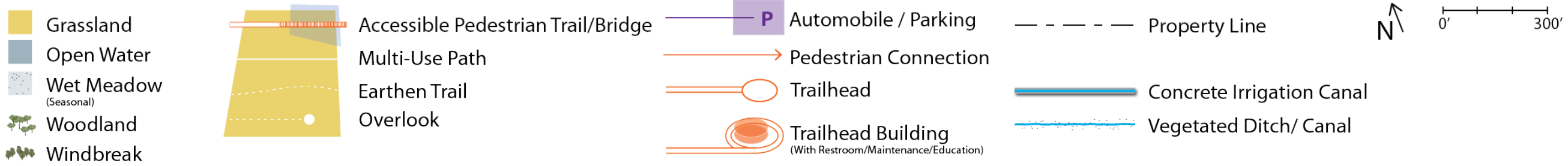
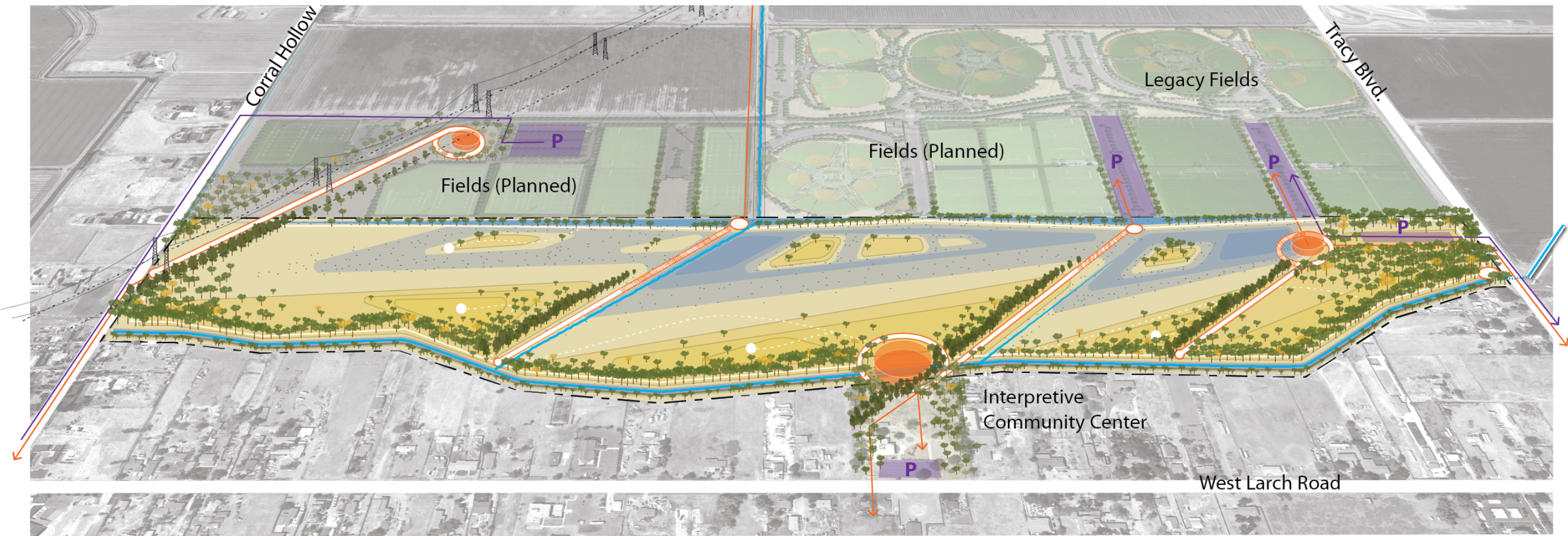
*\*Management of certain noxious species will be required.  
Seeding of a grass mix (native or non-native) will reduce maintenance and provide habitat but will require fire management.*



*\*Planting of certain species such as Black Walnut, certain Eucalyptus, Willow, Cottonwood, Oaks, Coyote Bush, and White Alder can be explored*

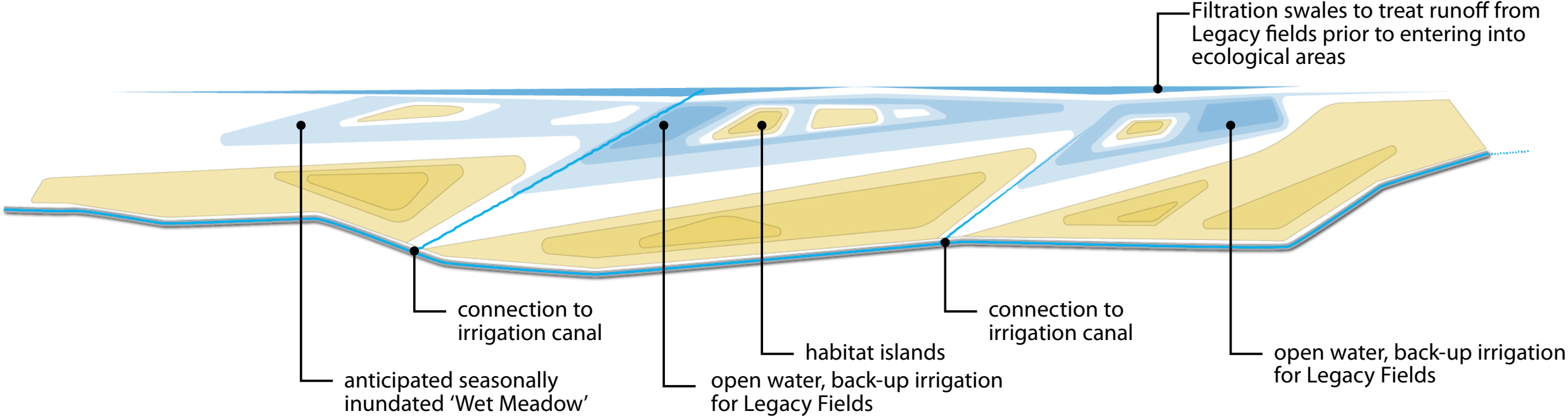


# NATURE ENABLED Tracy Nature Park



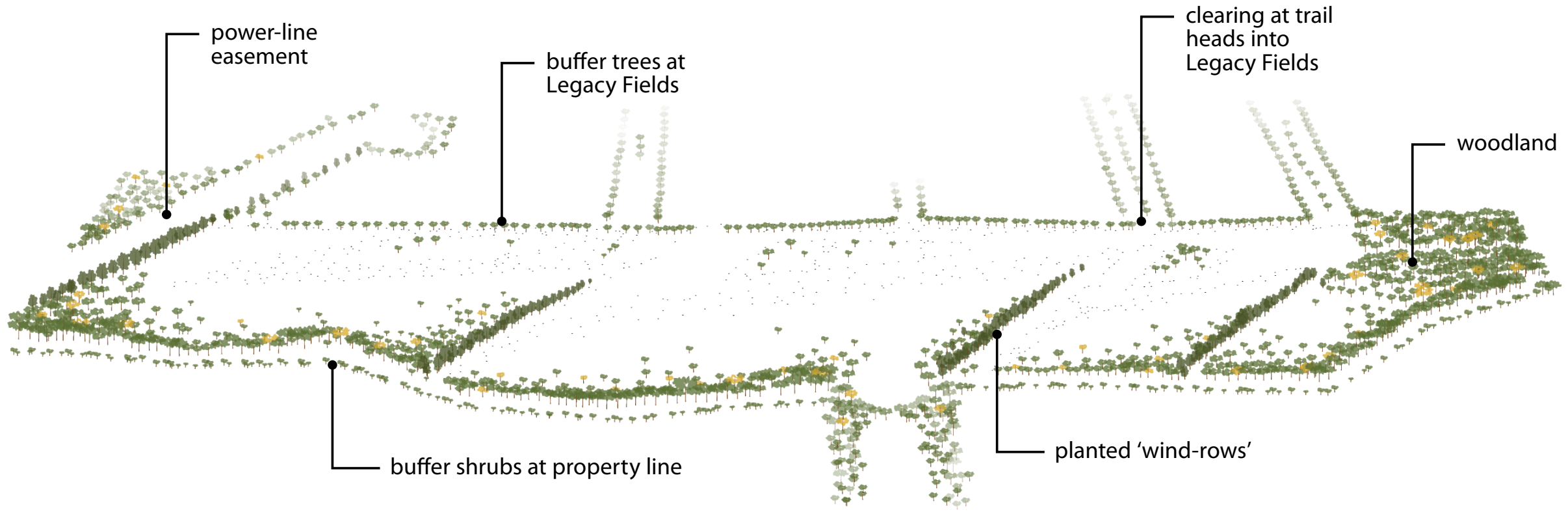


# NATURE ENABLED Topography



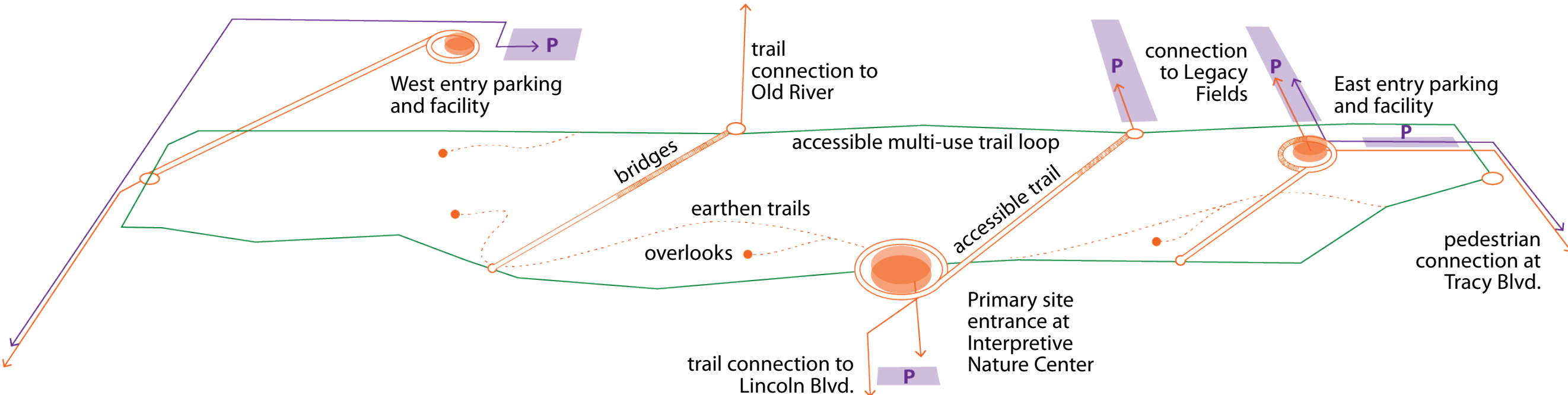


# NATURE ENABLED Vegetation





# NATURE ENABLED Trails/Access

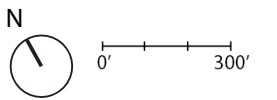
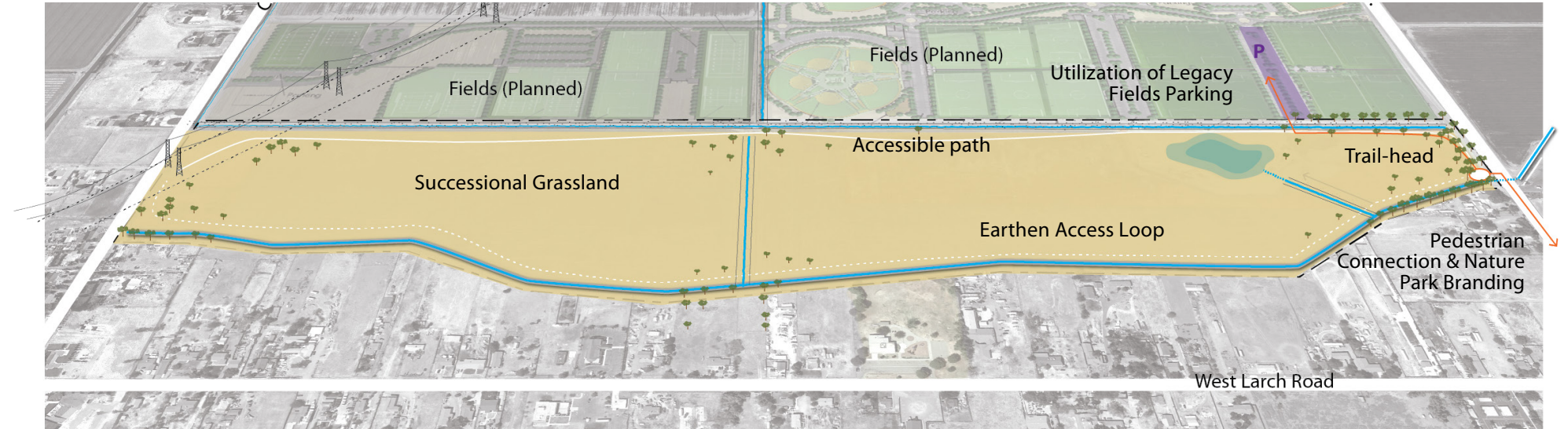




# PHASE 0

## COMMUNITY BUILD - UPON PLAN ADOPTION BY CITY COUNCIL

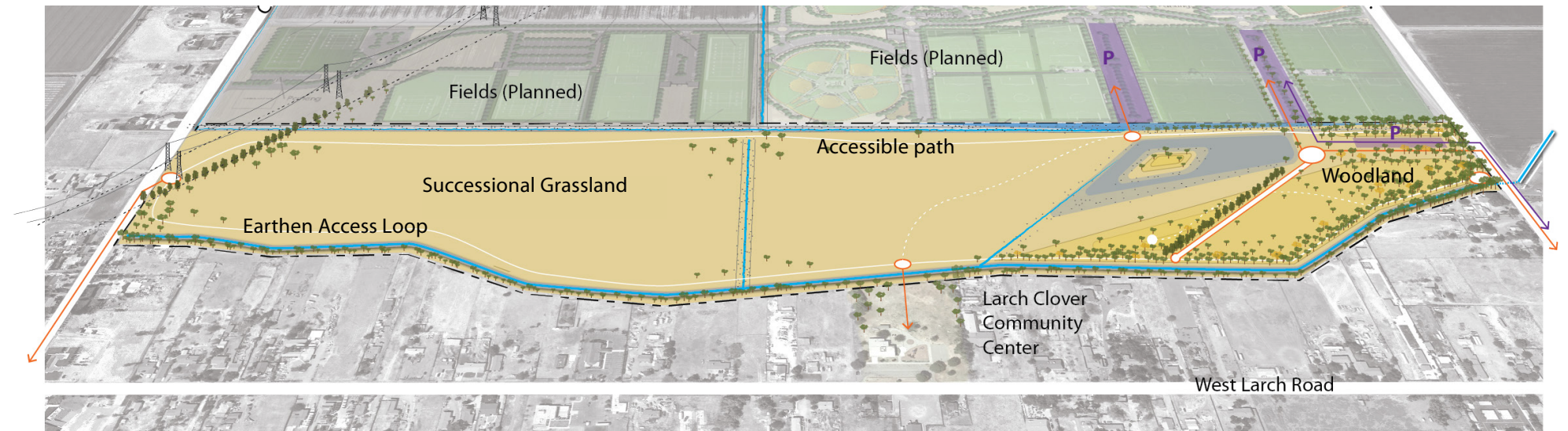
- Accessible trail-head
- 1 mile accessible path
- 2 mile earthen access loop
- Discontinue tillage of fields & planting of native/non-native seed mix
- Identity sign-age / Nature Park branding along Tracy Blvd.
- Initial tree planting by community



# PHASE 1

## INITIAL EARTH MOVING & GRAND OPENING OF NATURE PARK

- Earth moving
- ¼ mile paved accessible trail loop
- Dedicated intersection
- On-site parking
- Native restoration
- Interpretive sign-age & education
- Temporary restroom facility - at accessible trail-head
- Shade structures at trail-heads & overlook



Dedicated automobile intersection & parking for Nature Park



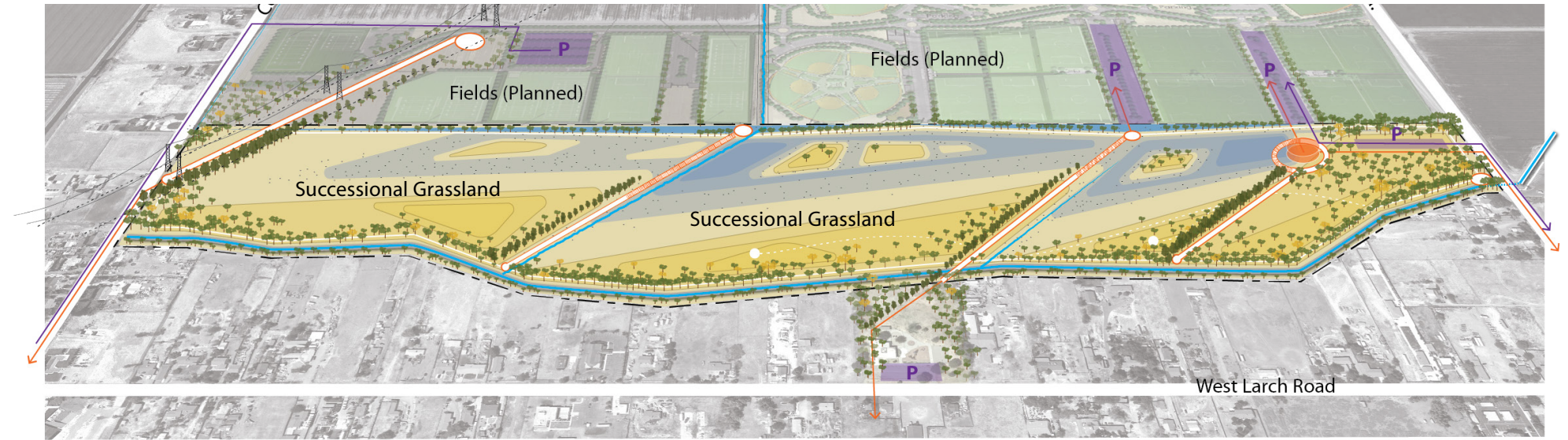
# PHASE 2

## COMPLETE SITE EARTHWORK

- Earth moving
- Integration with Larch Clover Community Center
- Permanent trail-head facility / restrooms at East entry
- West entry
- Additional accessible trial loops added
- Additional on-site parking

West entry trail head done in conjunction with Legacy Fields expansion

Nature Park Facility with permanent restrooms, maintenance facility and educational components



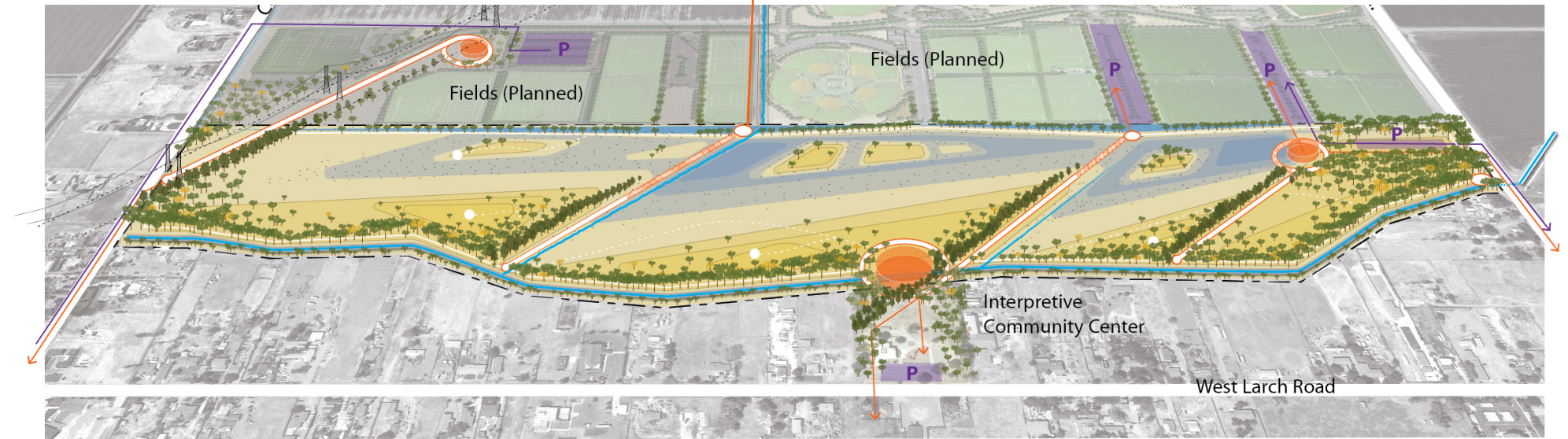
# PHASE 3

## BASED ON FURTHER FUNDING OPPORTUNITIES

- Dedicated Drive Entry & Parking in conjunction with Larch Clover Community Center
- Expansion of trail loops & overlooks
- Expansion of actively managed native habitat zones
- Interpretive Nature Center

West entry facility

Trail Connection to 'Old River'



Trail Connection to 'Lincoln Blvd.'





# TRACY NATURE PARK a legacy of its own





# TRACY NATURE PARK next steps

- Master Plan available to community online
- 2 week comment period
- California Environmental Quality Act Review
- Parks Commission Review
- Accept & Recommend Nature Park Master Plan to City Council
- Adoption by City Council
- Grant Funding Opportunities
- Begin implementation of 'Phase 0'





# TRACY NATURE PARK questions & comment

